

Topic Focus

Living things and their habitats, plants and animals and working scientifically.

Overview

The activities in this topic encourage children to see burial grounds as important havens for a range of wildlife. They encourage children to explore different habitats and to view burial grounds from different angles. By investigating mini-beasts, habitats and trees as well as important British species like Hedgehogs, Bumblebees, Lichens and Yew trees the children will use and develop observation and recording skills as well as simple field techniques.

The activities are: Tremendous Trees, Green Guardians, Mini-Beast Mania, Habitat Hunter, Let's Investigate Lichens, Creature Comforts - Hedgehogs, Bumblebees, Slow Worms, Swifts.

EYFS, KS1 & KS2

Key Skills

Investigating
Observing
Questioning
Classifying
Identifying
Recording
Measuring

Key Words

Habitat
Conditions
Mini-beast
Lichen

Curriculum Links

This topic helps develop pupils' knowledge, skills and understanding in Science, Geography, and PSHE.

EYFS

Understanding the World
The World



John Muir Award

Discover
Explore
Conserve
Share



Try the following activities if you are working for any of the following badges:

Rainbows - Look and Learn

Beavers - Explore Activity

Brownies - Environment, Friend to Animals, Science Investigator, Seasons, Wildlife

Cubs - Naturalist Activity

Guides - Animal Active, Science

Scouts - Naturalist Activity, Global Conservation Activity

Let's Investigate Lichens

Churchyards and burial grounds are very important places for Lichens. Many burial grounds have well over 100 species of Lichen in them. They can be thought of as Lichen sanctuaries. The suggested activities provide various ways for children to investigate, explore and learn more about them.

Learning Outcomes

Children will:

- Recognise that Lichens come in all shapes, sizes and colours
- Use evidence to support their ideas

Resources

Magnifying glass, drawing paper, measuring tape, view finder, camera, drawing materials, e.g. pencils, colour pencils, fine black pens, pastels, paper and sketchbooks.

Let's Investigate Lichens

Take a Closer Look at Lichens Photos

Take a Closer Look at Lichens Grid

Key Questions

What grows on headstones?

Introduction

Take a close look at one of the headstones with good examples of Lichens and introduce the children to them. Use the information in this pack to share interesting facts about them. Armed with a torch and magnifying glass go on a Lichen Hunt and search the rest of the burial ground to find more examples. Highlight the fact

that they are not only found on headstones but walls, buildings, trees, kerbs, gates etc. How many can they spot? Who found a lichen in the most unusual place? Are they all the same?

Activity ideas

1. Choose a challenge - With a partner, children choose a challenge from the let's investigate Lichens sheet. They could choose one challenge from each of the three groups:

Investigate – Discover and Do – Let's Talk!

2. What grows on headstones? - There are three kinds of Lichen – find examples and look at them carefully. Can you find headstones with Crusty, Leafy and Shrubby Lichens? Record your findings on the take a closer look at Lichens sheet and compare them. Use a magnifying glass to look at them in greater detail. You could draw them in detail too.

Plenary

Find your favourite Lichen. Show other groups the Lichen you thought was the most interesting. Explain why and take a close up photograph of it.

Back at School

- Use photographs of the Lichens explored to create an image gallery.
- Use the photograph and with a small viewfinder or frame choose a section of the Lichen in the picture that you would like to draw/sketch/paint in greater detail. Fill your page with a close up of the patterns and colours discovered.



© Frank Dobson

Let's Investigate Lichens

Investigate

Compare the size and appearance of Lichens found on the oldest and newest stones.
What do you notice?

Discover and Do

Look at Lichen through a magnifying glass.
Draw the patterns you find.

Let's Talk

You have 60 seconds to tell your partner what you know about Lichens. Go!

There are more Lichens found on the north side of the burial ground.
Is this true?

Sketch a detailed picture of your favourite Lichen.

With a partner stand in front a headstone with lots of different Lichens. Take it in turns to describe to each other in detail the appearance of one of the Lichens without revealing which one. Can your partner guess which one it is from the descriptions you gave?

Which surface do Lichens prefer?
How do you know?

Trace the outline of lots of different Lichens. Can you find two with similar shapes?

Persuade your partner to like your favourite Lichen. Describe why it is the best and why your partner should like it too.



Photographs © Frank Dobson

Take A Closer Look at Lichens

Crusty



Leafy



Shrubby



Have a look at the 3 kinds of Lichen

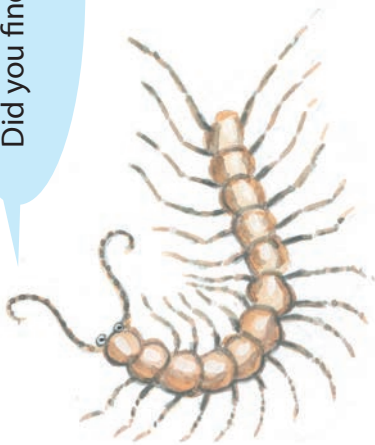
Can you find any similar?



Take A Closer Look at Lichens

Headstone	Crusty	Leafy	Shrubby
1			
2			
3			
4			

Did you find all 3 kinds?



Which is your favourite?